



19th May 2021

WEST END PROJECT - CREATING A PARK IN ALFRED PLACE PROGRAMME NOW AVAILABLE

Dear Resident / Business,

As part of the West End Project, the works to create a new park in Alfred Place started in winter last year. We have now completed the initial investigation work with the main construction now underway.

Included with this letter is the programme for the main stage of works on Alfred Place which includes taking up the existing road surface, drainage works, adding the new planters and furniture and the soft landscaping (adding grass and plants).

Please note that these dates on the programme are subject to change but any changes will be updated on our website where we also continue to share the weekly look ahead of works. You can also sign up to our electronic newsletter for regular updates.

www.camden.gov.uk/westendproject

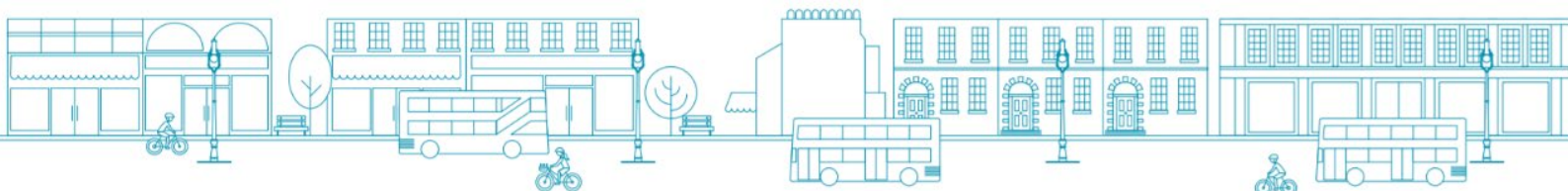
Key information:

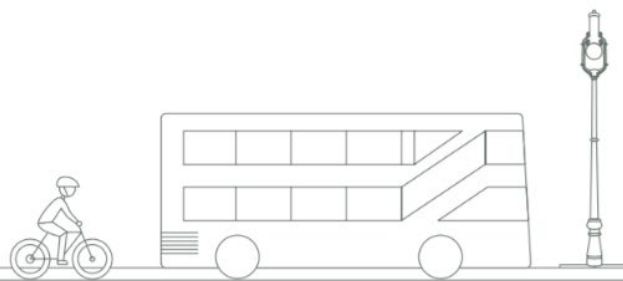
- idverde working hours Mon - Fri: 8am – 5pm and as needed Saturday: 8am – 1pm
- Alfred Place is now closed to traffic with some access points for deliveries and pedestrian access (see included site map)
- Some parking bays on Chenies Street have been suspended until the project is completed
- Work is expected to be completed in early November 2021.

A plan of the site is also included in this letter which shows access points for local deliveries and businesses. We have also maintained access for rubbish collections for the residential properties.

Noise should be expected throughout the construction period. The noisiest work will be the demolition works and the cutting of new paving slabs. Where possible noisy work will be kept to a minimum and acoustic barriers will be in place to reduce the sound. We will place acoustic barriers around the areas where we cut the paving slabs to help with the noise.

We apologise for any inconvenience that these works will cause. If you have any concerns during the Alfred Place works you can contact our contractors via 0800 141 2543. If you would like to find out more on the project or have any questions, you can email us at Westendproject@camden.gov.uk





What is the West End Project?

The West End Project is a £35 million public realm project bringing exciting improvements to the heart of Camden's busy West End. The project is delivering a bold vision for the future of the area which suffers from traffic congestion, road safety issues, narrow pavements, poor air quality and a lack of public spaces.

To help the area to continue to grow and flourish and to address these issues, the project is delivering a number of exciting schemes. This includes making Tottenham Court Road, Gower Street and Bloomsbury Street both two way to traffic, which has now taken place. On Tottenham Court Road access to some areas is now restricted to buses and cyclists only during key times. On Gower Street / Bloomsbury Street new protected cycle lanes have been added, in addition to a new pedestrian crossing in front of UCL. New public spaces are now being created in Princes Circus and Alfred Place.

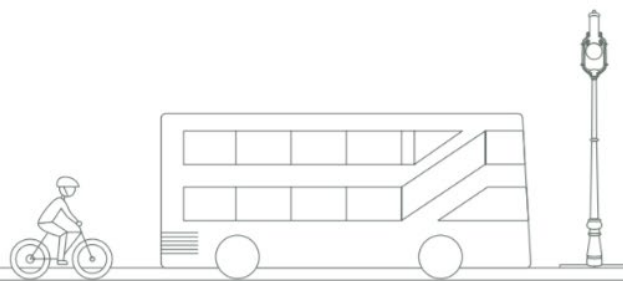
What will Alfred Place look like?

This image shows the future design of Alfred Place. You can explore the designs read more about the plans for this space on our website.



How can I find out more?

Website	camden.gov.uk/westendproject
E-mail newsletter	Sign up via our website
Alfred Place contact	0800 141 2543
Email	westendproject@camden.gov.uk



Alfred Place Programme



Jan 21

- The site area has been set up and surrounded by hoarding
- Access points are being maintained for residents and businesses



March 21

- Demolition of existing road surfaces and materials within the site area have now taken place



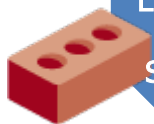
March - June 21

- Drainage work is underway
- Installation of new lighting cables



June - Aug 21

- New bespoke granite furniture and planters to be formed and installed
- New lighting added



Late Aug - late Sept 21

- Work outside the site area to create new access road, including demolition of the existing road materials, relaying of new materials and adding granite pavements



Aug-Sept 21

- Soft landscaping including plants, trees, shrubs, bulbs, and grass
- Installation of new play equipment



Early Nov 21

- Resin material added to paths / children play area surface added
- Project completed

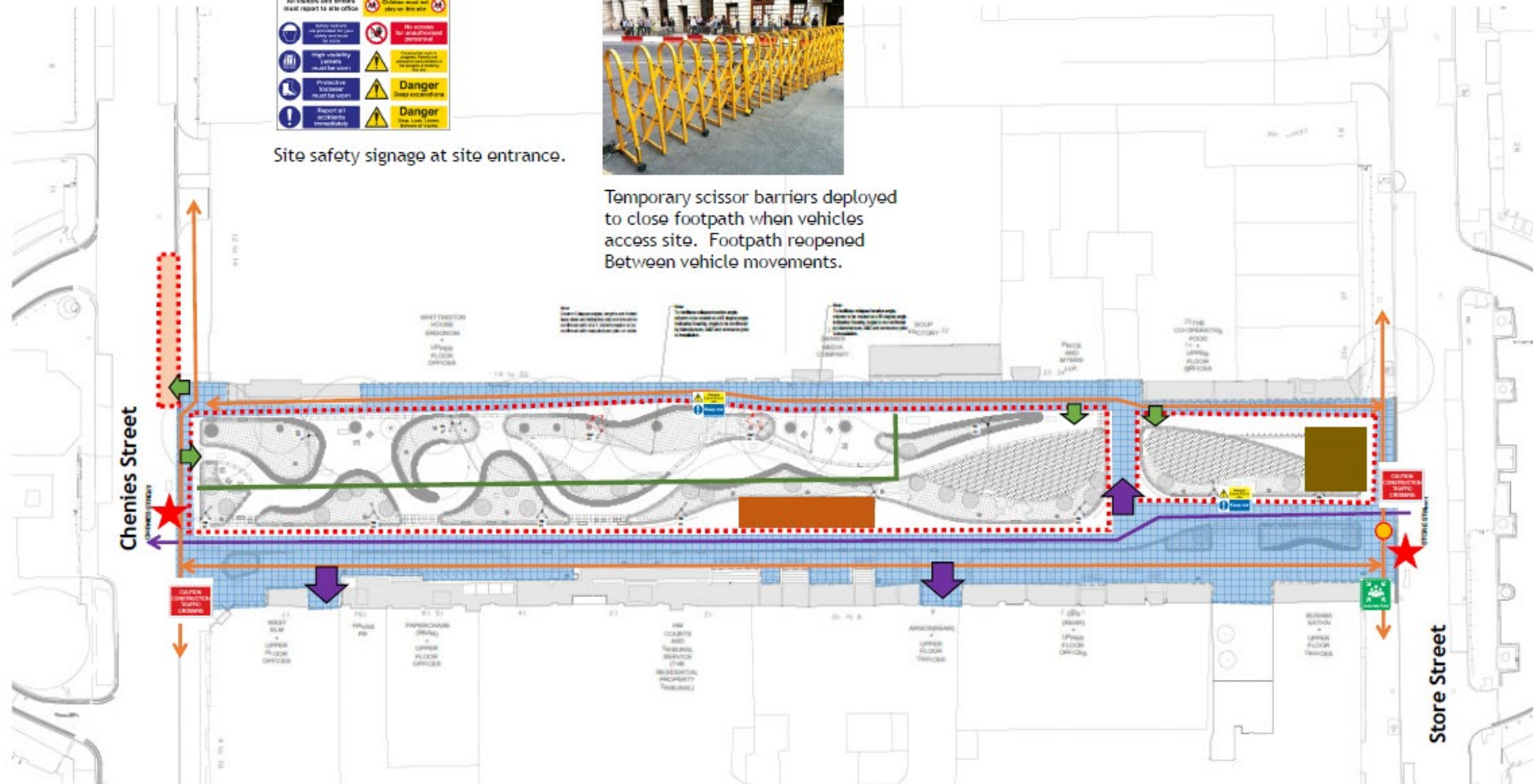
Alfred Place Site Logistics Plan



Site safety signage at site entrance.



Temporary scissor barriers deployed to close footpath when vehicles access site. Footpath reopened between vehicle movements.



	Site hoarding		Works delivered under Chapter 8		Banksman		Materials in		Construction site signage 10m spacing
	Tree Protective Fencing amended to suit works		Vehicular routes in/out of site		Loading bay and stockpile		Pedestrian Gate		Assembly point
	Site compound (welfare)		Pedestrian routes outside site		Temporary pedestrian barrier when construction traffic crossing		Access point to adjacent premises		Warning signage