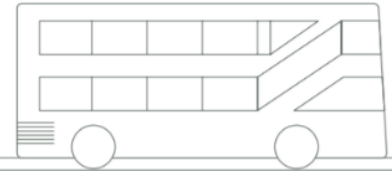
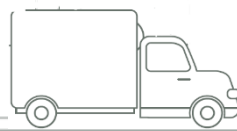


# West End project

Transforming the Tottenham Court Road area



Understand  
and work  
with the TCR  
restrictions

Check your  
nearest new  
loading bay

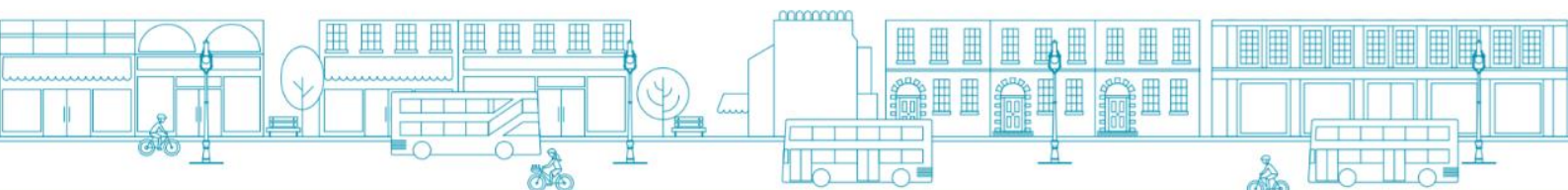
Check the  
route you can  
take to make  
deliveries

## West End Project A Guide to Deliveries

Information  
on the West  
End Project

How to get in  
touch with  
any  
questions

Find detailed  
maps of your  
area



# West End Project – A guide to deliveries

As part of the West End Project Tottenham Court Road and the surrounding area is being transformed. These could mean changes for the way you receive or make deliveries locally. This guide has information to help you plan for the upcoming changes and explore what that means for your business.

## We advise you to:

- Check the routes you can take in the future
- Find out where your new loading facilities will be
- Look at the TfL toolkits with helpful hints on how to save your business money by making deliveries more efficient
- Make sure you are ready for the changes by the dates below
- Get in touch if you have any questions

### Easter 2019

- Tottenham Court Road changes to two way
- You can still use the northbound lane
- New loading bays in place
- No access to southbound lane - Buses and cyclists only 24 hours a day until spring 2020
- Southbound loading bays accessible

### Spring 2020

- Gower Street / Bloomsbury Street change to two way
- New restrictions on sections of both northbound and southbound lanes on Tottenham Court Road
- Changes to road layout and loading in Princes Circus
- Gower Street new loading bays in place no more on street loading

# What is the West End Project?

The West End Project is a £35 million public realm project bringing exciting improvements to the heart of Camden's busy West End.

The project will deliver a bold vision for the future of the area which currently suffers from traffic congestion, road safety issues, narrow pavements, poor air quality and a lack of public spaces.

To help the area to continue to grow and flourish and to address these issues, the project will deliver a number of exciting schemes. This includes making Tottenham Court Road and Gower Street / Bloomsbury Street both two way to traffic. On Gower Street / Bloomsbury Street new protected cycle lanes will be added, in addition to a new pedestrian crossing in front of UCL. New public spaces will be created in Princes Circus and Alfred Place.



## What is changing?

From Easter 2019 Tottenham Court Road will be two way to traffic. Until the project is completed the southbound lane on Tottenham Court Road is restricted to buses and cyclists only 24 hours a day. All buses from Gower Street / Bloomsbury Street will move to Tottenham Court Road at Easter. During this first year the loading bays on the southbound lane can be accessed by crossing from the northbound lane and then leaving north.

From spring 2020 Gower Street / Bloomsbury Street will also go two way. From this point both northbound and southbound lanes on Tottenham Court Road will have permanent restrictions on the types of vehicles that can use certain stretches.

Gower Street / Bloomsbury Street will also become two way to traffic in spring 2020. There will be no restrictions on vehicles using this road in either direction. Work here to install cycle lanes means that new designated loading bays will replace on street loading.

Finally road layout changes to Princes Circus includes a change to Shaftesbury Avenue to create a new public space.

# How might this change how I make deliveries?

Until spring 2020 on Tottenham Court Road you can use the new loading bays on both sides of the road unrestricted at any time. The loading bays on the southbound lane must be entered and exited from the northbound lane only.

From spring 2020 between 8am and 7pm Monday to Saturday some stretches of Tottenham Court Road will not be accessible to vehicles. This means that you may have to **re plan some of the routes you use** to make deliveries, or move your deliveries outside of these times.

Reviewing the deliveries you make and receive, and assessing opportunities to group them, streamline them or move them to different times, might also help your business during this period of change. Visit <https://tfl.gov.uk/info-for/deliveries-in-london/delivering-efficiently> for guidance on what this would mean for your business.

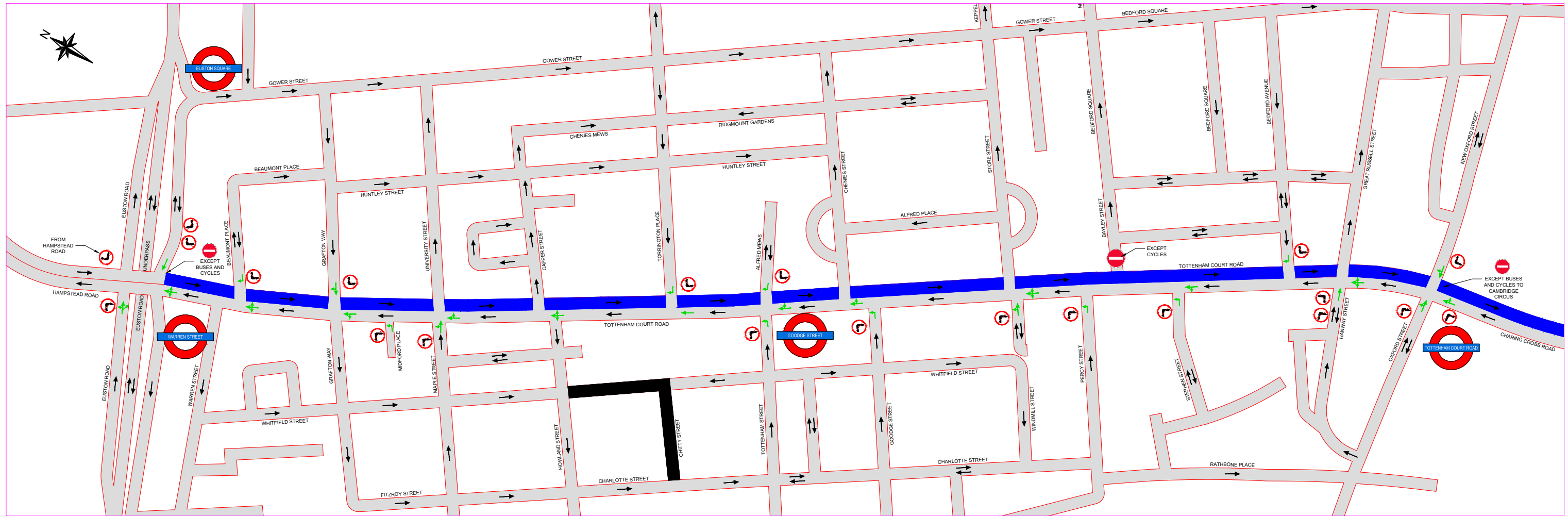
While we are working on Gower Street / Bloomsbury Street there will be areas of the road with restricted access to undertake kerbside delivery. On completion of the project the only loading on Gower Street / Bloomsbury Street will be in designated loading bays

**ACTION** - We advise you to look at the following maps which show where the restrictions will be in place.

# West End Project

## Tottenham Court Road Traffic Movements From Easter 2019

Updated March 2019



- Southbound traffic: This area is restricted to buses and cycles only at all times
- Temporarily closed roads (by other developments)
- Direction of traffic
- Permitted movements at junctions.





### Disclaimer:

- No traffic restrictions apply northbound.
- Emergency vehicles on blue lights may travel unrestricted as required.
- New loading and taxi bays now constructed on the southbound lane of Tottenham Court Road are available to use by crossing over from the northbound. All bays should then be exited northbound.
- Whilst every care has been taken to prepare this plan accurately, all traffic signs on street must be followed.

# West End Project

## Tottenham Court Road Traffic Movements From Easter 2020



-  AREA RESTRICTED TO BUSES AND CYCLISTS ONLY  
MON - SAT FROM 8am - 7pm
-  Direction of traffic
-  Permitted movements at junctions.
-  Access for cycles only

### NOTE:

- Emergency vehicles on blue lights may travel unrestricted as required.
- In the event there is a discrepancy from this plan and what is on site, traffic signs, signals and road markings should be followed.



# What changes are there to loading and unloading?

Both Gower Street/Bloomsbury Street and Tottenham Court Road will have new loading bays which will replace on street loading.

**ACTION** - We recommend that you look at the detailed maps to find your nearest loading bays. Check: <https://www3.camden.gov.uk/westendproject/maps/> or the end of this guide

When you are in a loading bay there is no time limit on loading activity as long as you are actively loading.

There is no change to side-street loading times.

Gower Street / Bloomsbury Street loading bays can only be used between 10am and 2pm.

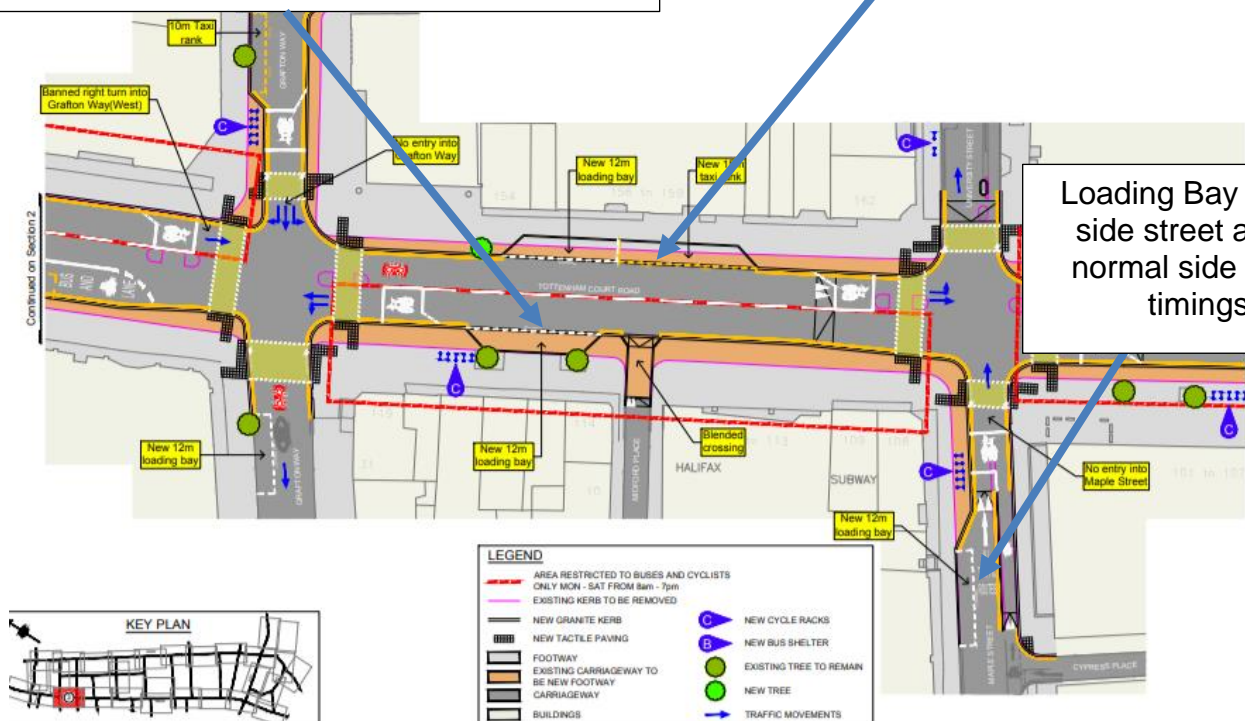
There will also be new loading bays in and around Princes Circus.

From spring 2020 some loading bays on Tottenham Court Road can be accessed at different times of the day. The map below gives an example of these.

Loading Bay in the restricted area (shown by red dashed box) so can only be used before 8am or after 7pm Monday – Saturday or anytime on Sunday.

Loading Bay not in restricted area so can be used at any time.

Loading Bay on the side street as per normal side street timings



# Helpful resources

## Delivery Driver Postcards

Included in this pack are postcards you can give to any delivery drivers which stop at your business. These are also available from the West End Project Information Centre in the Building Centre. Details on this can be found in the section below.

## Maps

All maps included in this pack are available online. A large map showing the whole area is also available on the website. [www3.camden.gov.uk/westendproject/maps/](http://www3.camden.gov.uk/westendproject/maps/)

## Links to TfL guides

TfL have created a series of toolkits and materials for local businesses, covering proven methods to make your deliveries and servicing trips more efficient and cost-effective. The toolkits cover a range of subjects and include guidance and materials on:

- [Waste consolidation](#)
- [Personal deliveries](#)
- [Retiming deliveries](#)

You can find these guides, plus the related materials, at: [www.tfl.gov.uk/info-for/deliveries-in-london/delivering-efficiently](http://www.tfl.gov.uk/info-for/deliveries-in-london/delivering-efficiently)

# How can I find out more?

If you have any more questions please get in touch with us. There are lots of ways to keep up to date as the project continues:

E-mail newsletter	Sign up via our website
Website	<a href="http://camden.gov.uk/westendproject">camden.gov.uk/westendproject</a>
24 hour contact	0845 3308 743
Visit Us	The Building Centre, Store Street, London, WC1E 7BT Tuesdays 3pm - 6pm
Email	<a href="mailto:westendproject@camden.gov.uk">westendproject@camden.gov.uk</a>