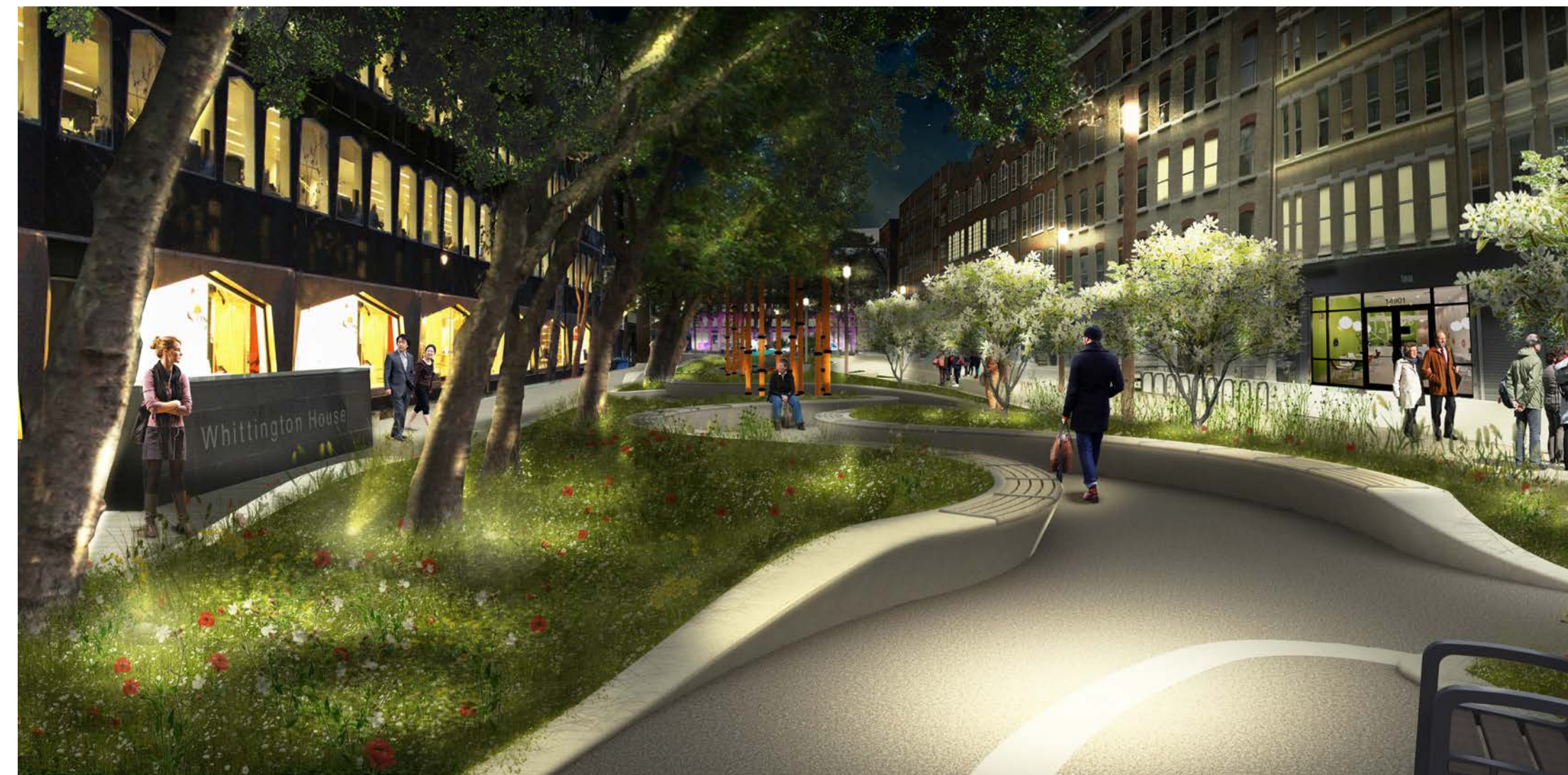


View South East: The 'Woodland Walk' + 'Play Glades'



Existing view



Proposed evening view



Proposed view

Proposed Materials



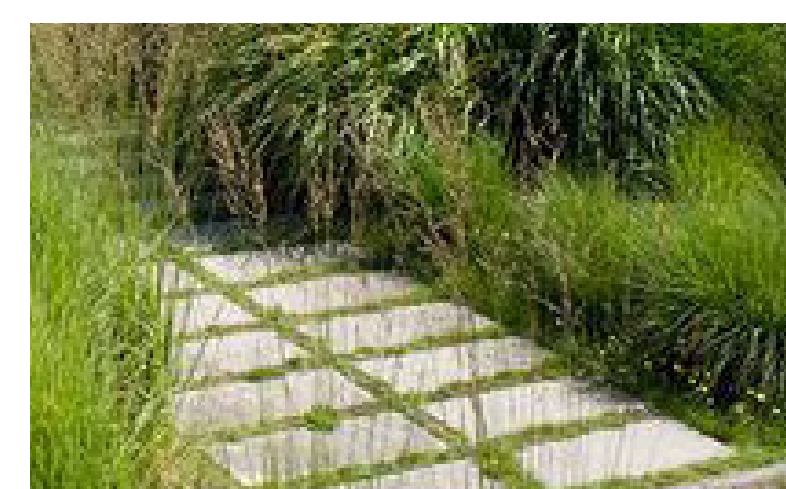
Granite setts to trafficked areas and footways



Bound gravel to central meandering path



Green safety surface to play spaces



Stepping stones as cut throughs



Granite to sculpted seat and path edges

Alfred Place

Public Realm Proposals

View North West: The 'Lounging Lawns'



Existing view

Planting objectives :

- Introduce a sense of 'wild in the city'.
- A colourful and biodiverse wildflower meadow, supported by other carefully selected shrubs and perennials.
- Support the playful identity of the place.
- Provide an oasis of green for people and a wildlife.
- Provide Sustainable Urban Drainage.
- To maintain sightlines.
- To minimise maintenance

- 1 Colourful
- 2 Pleasant to touch
- 3 Beautiful scent
- 4 Enclosure and structure
- 5 Playful
- 6 Move with the wind
- 7 Seasonal change
- 8 Perfect for pollinators

Prunus maackii



Amelanchier lamarckii



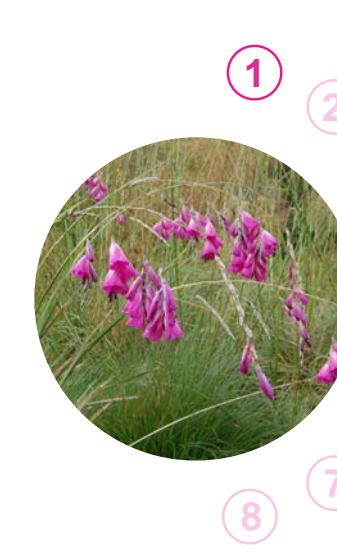
Wildflower mix (mix TBC)



Miscanthus sinensis 'Kleine Fontaine'



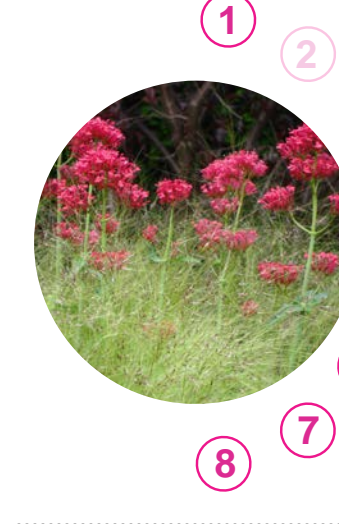
Dierama pulcherrimum



Stachys byzantina



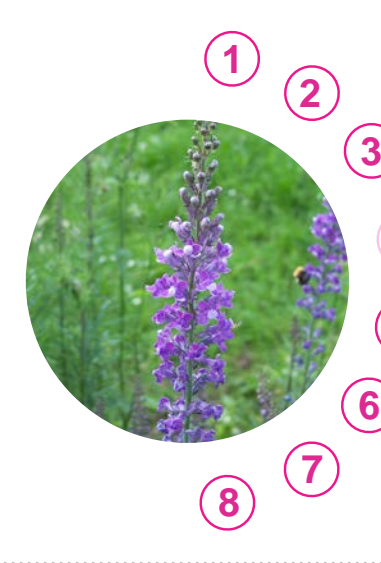
Centranthus ruber coccineus



Lunaria annua



Linaria purpurea



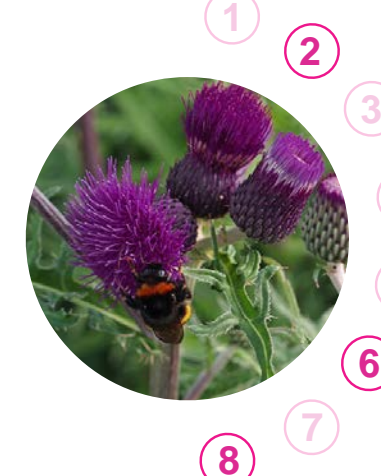
Knautia macedonia



Persicaria amplexicaulis 'Firetail'



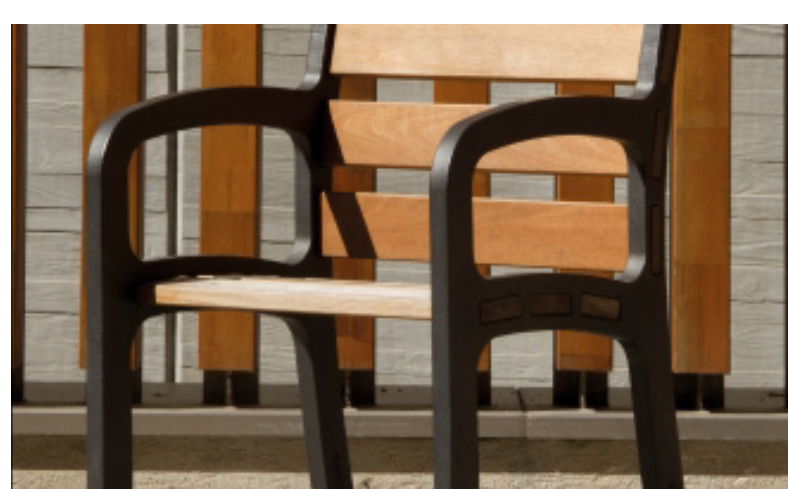
Cirsium rivulare 'plume thistle'



Proposed view



Timber to seating edge
(with skateboard protection and
a mixture of backs and armrests)



Individual seats
(with backs and armrests)



Exciting and challenging play;
a playable landscape not a 'play
pen' (simple view)



Opportunities for crawling,
climbing, balancing, swinging
and rocking. (simple view)



Planting character